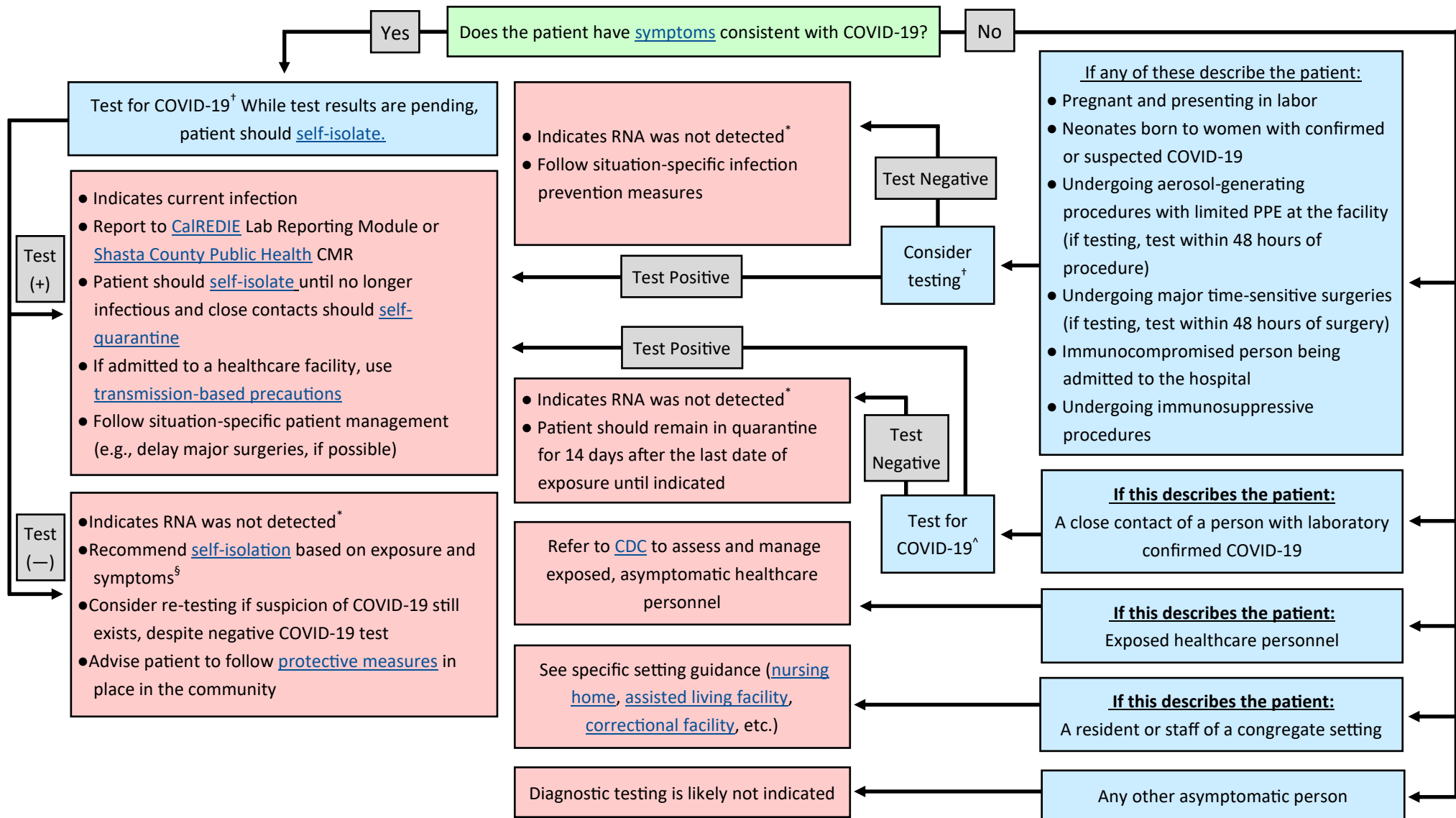


COVID-19 Molecular Testing Algorithm

For healthcare providers to understand who to test and what recommendations to provide based on the results



Recommendations are based on [CDC guidance](#), [Infectious Diseases Society of America Guidelines on the Diagnosis of COVID-19](#).

†For known specimen collection locations in Shasta County, see [here](#).

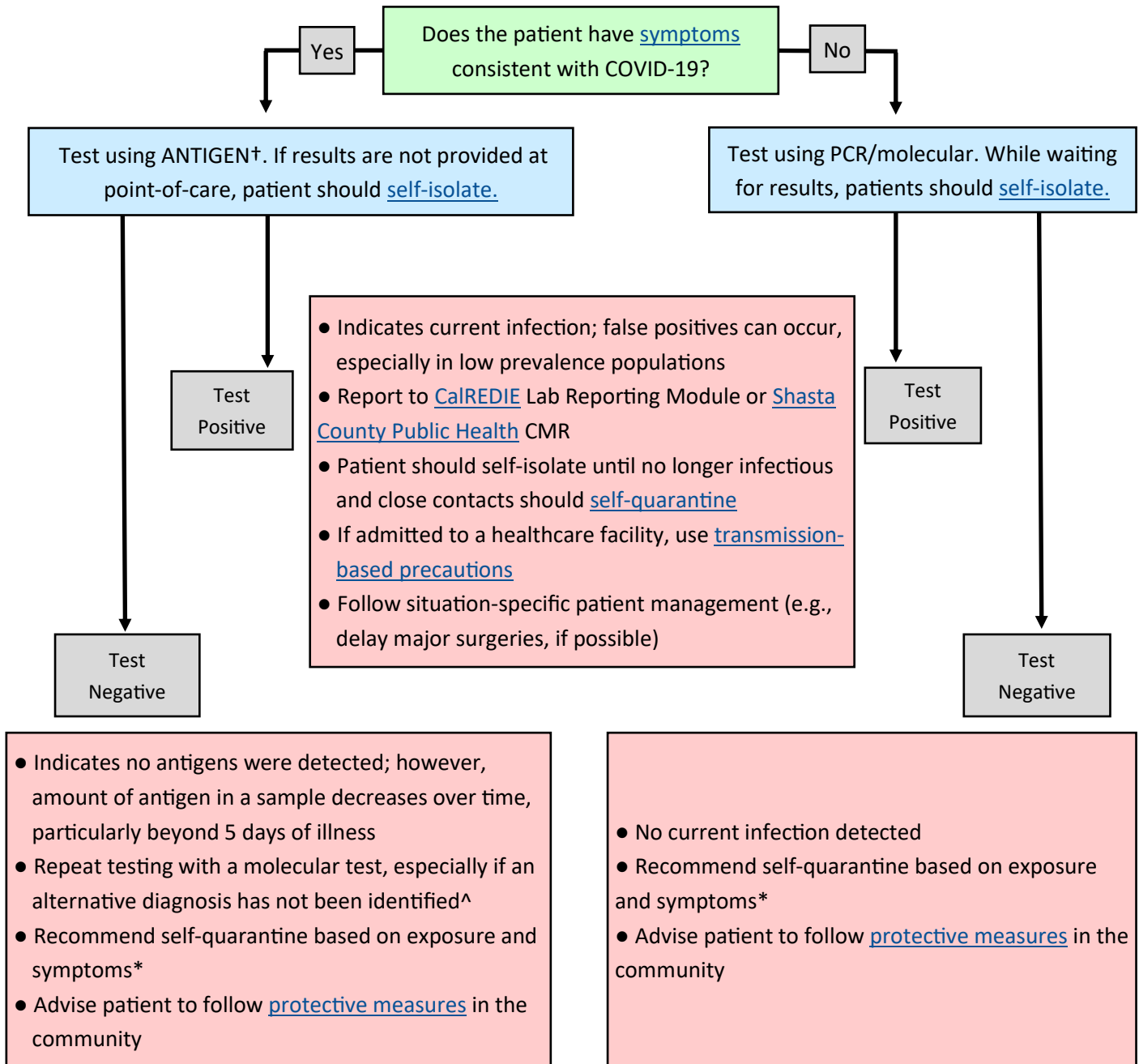
^If there is a known exposure, it is reasonable to test approximately one week after exposure based on the average incubation period and available evidence to date. If testing is not readily available for all close contacts, prioritize symptomatic close contacts or those at increased risk for severe COVID-19.

§If the person had [known exposure to someone with COVID-19](#), the person should continue to self-quarantine until 14 days after the last known exposure. Infection may take up to 2 weeks after exposure to occur. If the person did not have a known exposure to someone with COVID-19, the person should isolate until at least 24 hours after symptoms resolve (if symptomatic) or follow protective measures in the community (if asymptomatic).

*A negative molecular test result for SARS-CoV-2 means that at the time of collection, RNA from this virus was not present in the specimen above the limit of detection.

COVID-19 Antigen Testing Algorithm

For healthcare providers to understand who to test and what recommendations to provide based on the results



Recommendations are based on [CDC guidance](#), [Infectious Diseases Society of America Guidelines on the Diagnosis of COVID-19](#), [APHL's Considerations for Implementation of SARS-CoV-2 Rapid Antigen Testing](#), current FDA Emergency Use Authorizations for available tests, and [FDA FAQ](#).

†Point-of-care (POC) tests must be performed at a CLIA-certified laboratory or testing site. If there is a known exposure, it is reasonable to test approximately one week after exposure based on the average incubation period and available evidence to date. Refer to [long term care facility guidance](#) for serial antigen testing among asymptomatic individuals in nursing homes.

^When confirming antigen test result with a molecular test, it is important that the time interval between the two sample collections is less than two days, and there have not been any opportunities for new exposures between the two tests.

*If the person had [known exposure to someone with COVID-19](#), the person should continue to self-quarantine until 14 days after the last known exposure. Infection may take up to 2 weeks after exposure to occur. If the person did not have a known exposure to someone with COVID-19, the person should isolate until at least 24 hours after symptoms resolve (if symptomatic) or follow protective measures in the community (if symptomatic).