



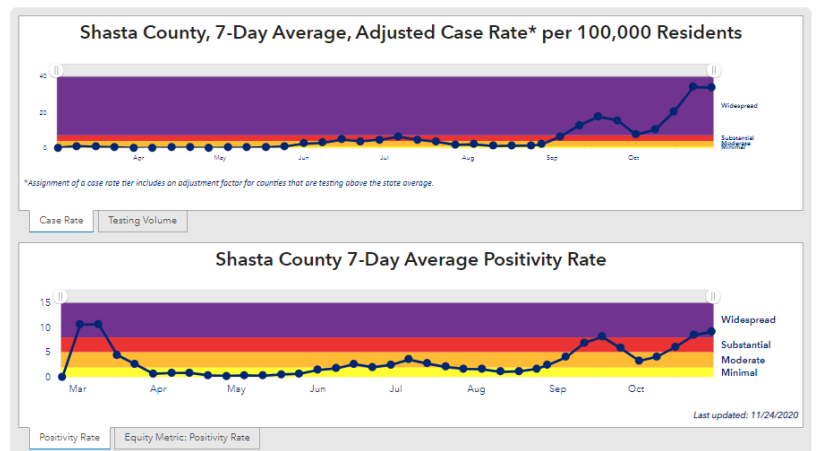
COVID-19 INCIDENT UPDATE: November 24, 2020

Statistics from November 22 and 23, 2020

INCIDENT FACTS AND SUMMARY			
Total Confirmed Cases:	Hospitalized in Shasta County	In Isolation	Active Cases
4,470	43	*	760 (estimate)
Confirmed Cases Sunday and Monday	Currently in the Intensive Care Unit (ICU)	In Quarantine	Released from Isolation to Date
214* Sunday, 109 Monday	6	*	3,667
Negative Tests Sunday and Monday	Negative Tests to Date	Total Tests	Deaths
745	80,668	85,138	43

CURRENT SITUATION

- We had 323 cases on Sunday and Monday, including 167 men, 154 women and 2 people of unknown gender:
 - 13 children under age 13
 - 28 teenagers
 - 53 people in their 20s
 - 50 people in their 30s
 - 47 people in their 40s
 - 50 people in their 50s
 - 36 people in their 60s
 - 29 people in their 70s
 - 15 people in their 80s
 - 2 people over age 89



- About the data:** Saturday’s cases were lower than expected due to a scheduled update in the state electronic laboratory reporting system. The increase of cases on Sunday shows that influx of cases transmitted between laboratories and the State Disease Registry. **Isolation and quarantine** numbers are not available due to high case counts.
- Shasta County is one of 9 counties to receive a new state testing site, and one of 19 counties to receive a state testing traveling team. Both will begin operations next week and you can make appointments now. The new testing site will be open Tuesday through Saturday **by appointment only** at the Boggs Building, 2420 Breslauer Way, in Redding. The traveling team will alternate between the [Health and Human Services Agency offices](#) in the City of Shasta Lake, Anderson and Enterprise, and are also available **by appointment only**. Go to <https://lhi.care/covidtesting> to schedule a test for any of these sites.
- Shasta County remains in the purple (“widespread”) tier. Our adjusted case rate decreased from 34.0 to 33.8 daily cases per 100,000 residents, exceeding the purple tier limit of 7.0. The actual case rate is 51.8, but it was adjusted down because the county’s per capita testing volume is higher than the state average. Our positivity rate increased from 8.4% to 9.1%. The purple tier begins at 8%. You can find this data and more at www.ShastaReady.org; click “Data and Statistics.”
- In Shasta County, people over age 65 represent 10% of COVID cases, but 75% of COVID deaths. Please consider this risk when planning holiday celebrations. Visit www.ShastaReady.org to learn more.