



COVID-19 INCIDENT UPDATE: November 19, 2020

Statistics from November 18, 2020

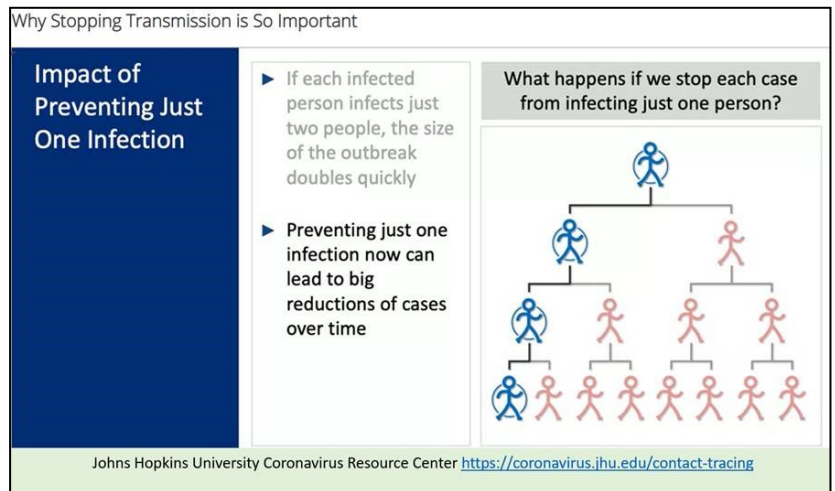
INCIDENT FACTS AND SUMMARY			
Total Confirmed Cases:	Hospitalized in Shasta County	In Isolation	Active Cases
3,719	35	*	*
Confirmed Cases Wednesday	Currently in the Intensive Care Unit (ICU)	In Quarantine	Released from Isolation to Date
149	4	*	*
Negative Tests Wednesday	Negative Tests to Date	Total Tests	Deaths
**	**	**	42

CURRENT SITUATION

- We had 149 new cases on Wednesday, including 70 men and 79 women:

- 6 children under age 13
- 15 teenagers
- 35 people in their 20s
- 26 people in their 30s
- 22 people in their 40s
- 16 people in their 50s
- 15 people in their 60s
- 9 people in their 70s
- 1 person in their 80s
- 1 person over age 89
- 3 people of unknown age

- We are sorry to have to report five deaths today. The patients were a man in his 70s, a woman in her 70s, a man in his 80s, a woman in her 80s, and a woman over age 89.



- *Due to high case counts and delays in lab reporting, we do not have an accurate count of people who are on isolation or quarantine. People who test positive should self-isolate and notify their close contacts. Instructions can be found at www.ShastaReady.org under "Quarantine and Isolation Instructions."
- **The state is updating the system it uses to collect negative test results, so we don't have access to current numbers today.
- The rate at which COVID-19 is spreading is measured by the effective reproduction number (R-effective), which is the average number of additional people who will be infected by each person who is COVID-19 positive. Shasta County's R-effective is 1.36, up from October 1 when it was 1.03. This means we can expect that the 149 cases we saw yesterday will infect approximately 203 more individuals.