



## COVID-19 INCIDENT UPDATE: October 20, 2020

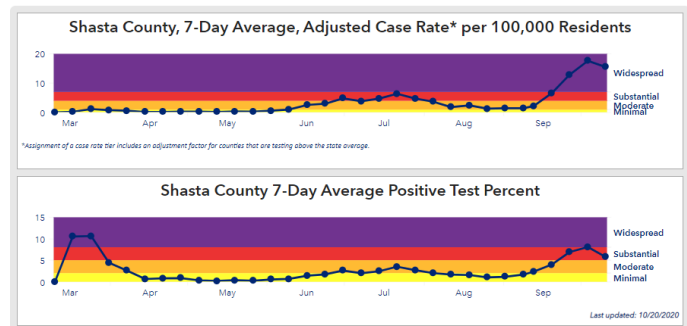
Statistics from October 18 and 19, 2020

INCIDENT FACTS AND SUMMARY			
Total Confirmed Cases:	Hospitalized in Shasta County	In Isolation	Active Cases
<b>1,786</b>	<b>10</b>	<b>132</b>	<b>142</b>
Confirmed Cases Sunday and Monday	Currently in the Intensive Care Unit (ICU)	In Quarantine	Released from Isolation to Date
<b>42 Sunday, 21 Monday</b>	<b>2</b>	<b>407</b>	<b>1,615</b>
Negative Tests Sunday and Monday	Negative Tests to Date	Total Tests	Deaths
<b>503</b>	<b>57,796</b>	<b>59,582</b>	<b>29</b>

### CURRENT SITUATION

- We had 63 new cases on Sunday and Monday, including 26 men and 37 women. They are:

- 7 children under age 13
- 5 teenagers
- 10 people in their 20s
- 8 people in their 30s
- 13 people in their 40s
- 9 people in their 50s
- 7 people in their 60s
- 3 people in their 70s
- 1 person in their 80s



- Shasta County has dropped into the purple (“widespread”) range after Tuesday’s statewide data update, though our numbers are improving. Our adjusted case rate decreased from 17.6 to 15.5 daily cases per 100,000 residents, but is still in the purple range. Our positivity rate also decreased from 8.1 to 5.8 percent, which is in the red (“substantial”) range. Tiers are assigned based on the most restrictive measurement. These numbers are a seven-day average with a seven-day lag (Oct. 4-10).
- As a result, the following changes are required by Friday (the complete list is at [www.ShastaReady.org](http://www.ShastaReady.org), select “Roadmap to Recovery”):
  - Bars/breweries/distilleries with no meal must close.
  - Restaurants, museums, zoos, aquariums, places of worship, movie theaters, gyms and fitness centers, wineries, family entertainment centers and cardrooms can only be open outdoors.
  - Retail and shopping centers can be open indoors at 25 percent capacity.
  - Personal care services, including hair salons, nail services, tattooing, piercing and electrolysis, can be open indoors.
- Testing volume can make a big difference in a county’s case rate. Shasta County had a 22.9 case rate this week, but because the county’s per capita testing volume is higher than the state average, it was reduced to 15.5. To get a test, go to [www.ShastaReady.org](http://www.ShastaReady.org) and click “Get tested” for options.