



Residential Stairways and Landings
Shasta County
Department of Resource Management
Building Division

1855 Placer Street, Suite 102 Redding, CA 96001-1759
 (530) 225-5761 * Fax (530) 245-6468

Handout

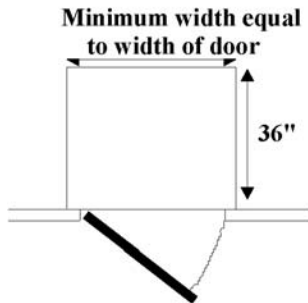
110

01/08
 Page 1 of 2

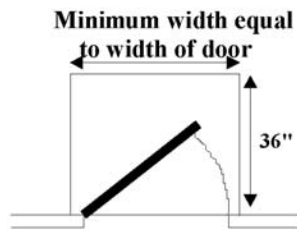
(2007 CBC – Permit applications on or after January 1, 2008)

The following guidelines for the construction of landings and stairways apply only to single-family residential, private garages, and private-use agricultural buildings.

Landings at doors

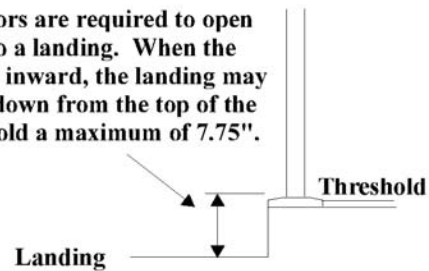


All landings are to be sloped a maximum of 1/4" per foot to drain water.



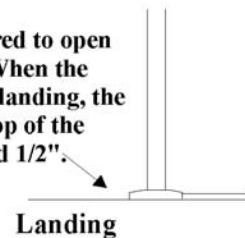
Door swings in

Exterior doors are required to open directly onto a landing. When the door swings inward, the landing may be stepped down from the top of the door threshold a maximum of 7.75".



Door swings out

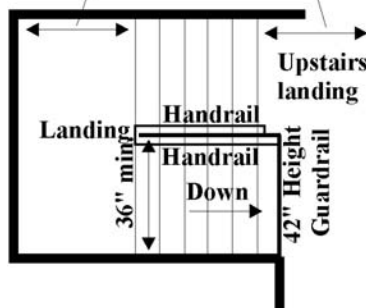
Exterior doors are required to open directly onto a landing. When the door swings out over the landing, the step down from the top of the threshold must not exceed 1/2".



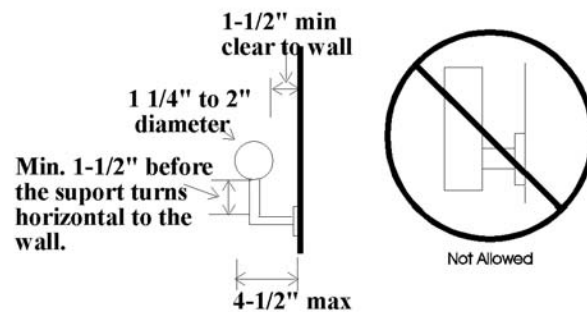
Stairways and Handrails

Note: Winding, circular or spiral stairways have special requirements not covered in this handout.

Equal to width of stairs but need not exceed 48".



Private stairways and landings are required to be a minimum of 36" in width. Handrails are required on one side of an interior stairway and continuous between landings. Stairways with less than 4 risers are not required to have handrails.



The handgrip portion of handrails shall be round and not less than 1-1/4" or more than 2" in cross-sectional dimension. If not round then the handgrip portion must have a 2-1/4" maximum cross section and a perimeter of 4" minimum to 6.25" maximum.

The handgrip portion of handrails shall have a smooth surface with no sharp corners. Other shapes may be acceptable if they provide an equivalent gripping.



Residential Stairways and Landings
Shasta County
Department of Resource Management
Building Division

1855 Placer Street, Suite 102 Redding, CA 96001-1759
(530) 225-5761 * Fax (530) 245-6468

Handout

110

01/08
Page 2 of 2

When the run is less than 11 inches with a solid riser, a nosing is required.

